

Agder Mobility Lab

# Migration of Enterprise VoIP/SIP Solutions towards IMS

Ram Kumar, Frank Reichert, **Andreas Häber**, Anders Aasgard, Lian Wu

[andreas.haber@hia.no](mailto:andreas.haber@hia.no)  
[ikt.hia.no/amf/](http://ikt.hia.no/amf/)

Agder University College  
Faculty of Engineering and Science

Agder Mobility Lab

## Agenda

- Testbed Overview
- Solutions for VoIP/SIP migration towards IMS

Agder University College  
Faculty of Engineering and Science

Agder Mobility Lab

## Testbed Overview

Agder University College  
Faculty of Engineering and Science

Agder Mobility Lab

## Distributed SIP/IMS Testbed

Devoteam Group Grimstad was formerly known as auSystems and Teleca Wireless Solutions

Agder University College  
Faculty of Engineering and Science

Agder Mobility Lab

## VoIP Testbed

Agder University College  
Faculty of Engineering and Science

Agder Mobility Lab

## AUC Testbed – IMS part

Using Fraunhofer FOKUS Open IMS Core components

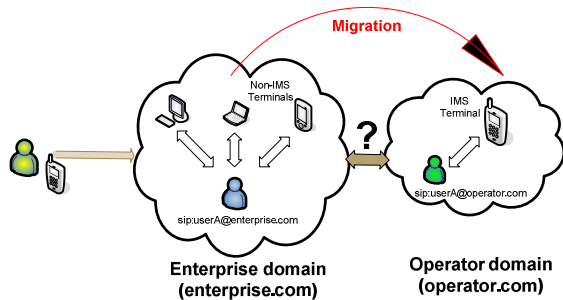
Agder University College  
Faculty of Engineering and Science

## Connection to Ericsson Eurolab R&D

- Just recently established a tunnel to Ericsson as part of our collaboration
- Gives us a more realistic view when researching roaming scenarios
  - For example, round-trip times become more realistic (~40ms), as compared to "synthetic" setups

## Solutions for VoIP/SIP migration towards IMS

## Reference Scenario



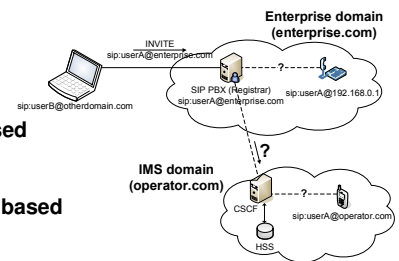
## Migration Solutions

### I. Forking

### II. Client based

### III. Presence based

### IV. Link registration



## Summary

- Layout of a testbed for SIP/VoIP and IMS study
  - Key components based on Fraunhofer FOKUS OpenIMS, Asterisk and OpenSER
- Presented how operators can use IMS to support enterprises and legacy SIP/VoIP clients
- Testbed is now used for
  - interconnecting residential networks over IMS
  - new distributed media services

## Questions

